

Aluminized Steel Type 2 HEL-COR®

stream crossings

OWNER

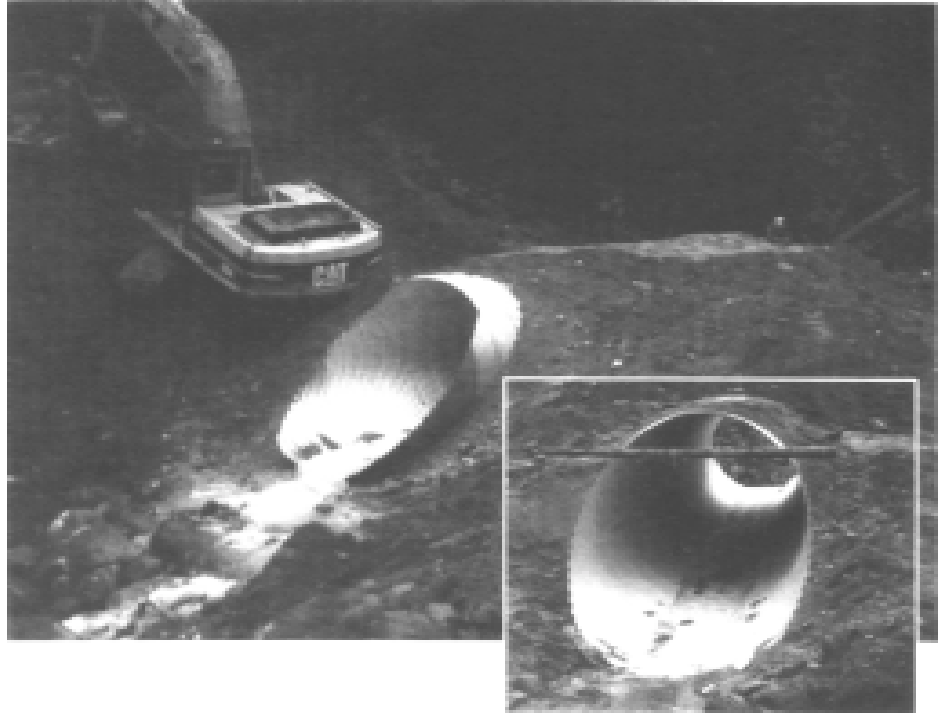
Meadow Creek Cedar Ltd.

CONSULTANT

Timberland Consultants Ltd.

LOCATION

Kaslo, B.C.



Installation Details:

This culvert installation included a 17 m long, 2700 mm diameter Aluminized Steel Type 2 HEL-COR® Pipe, manufactured using a 125 mm X 25 mm corrugation and a wall thickness of 3.5 mm. To improve hydraulic efficiency, the pipe was fabricated with bevelled ends. Armtec 200 non-woven Geotextile was installed to form a barrier at the culvert inlet to counteract scour and erosion effects.

The design consultant recognized that the cost premium associated with upgrading from galvanized steel to an aluminum coated steel sheet was minimal compared to the longevity offered by Aluminized Steel type 2. With over 45 years of in-situ testing, Aluminized Steel Type 2 has been proven to last longer than galvanized steel.

The minimum service life of a 1.6 mm thick wall Aluminized Steel Type 2 pipe, installed in appropriate environmental conditions, is 75 years.

For this main-line stream crossing, the owner required a culvert material with a relatively long design life and recognized that future rehabilitation or replacement, if required, would present a significant cost.

Armtec also manufactured warning signs and sign posts for this installation and shipped them with the culvert pipe to the site, resulting in added cost savings for the owner.

Aluminized Steel Type 2 HEL-COR clearly represented the best long term value to the owner.

CASE HISTORY

Aluminized Steel Type 2 HEL-COR® Stream Crossings

Head Office: 15 Campbell Road, P.O.Box 3000, Guelph, Ontario N1H 6P2

Sales Offices: Nanaimo, Prince George, Edmonton, Calgary, Lethbridge, Grande Prairie, Saskatoon, Winnipeg, Thunder Bay, Sudbury, London, Toronto, Peterborough, Ottawa, Quebec City, Halifax, St. John's and Bishop's Falls



Providing Engineered solutions for over 90 years.