

Aluminized Steel Type 2 HEL-COR®

Stormwater Detention System

OWNER

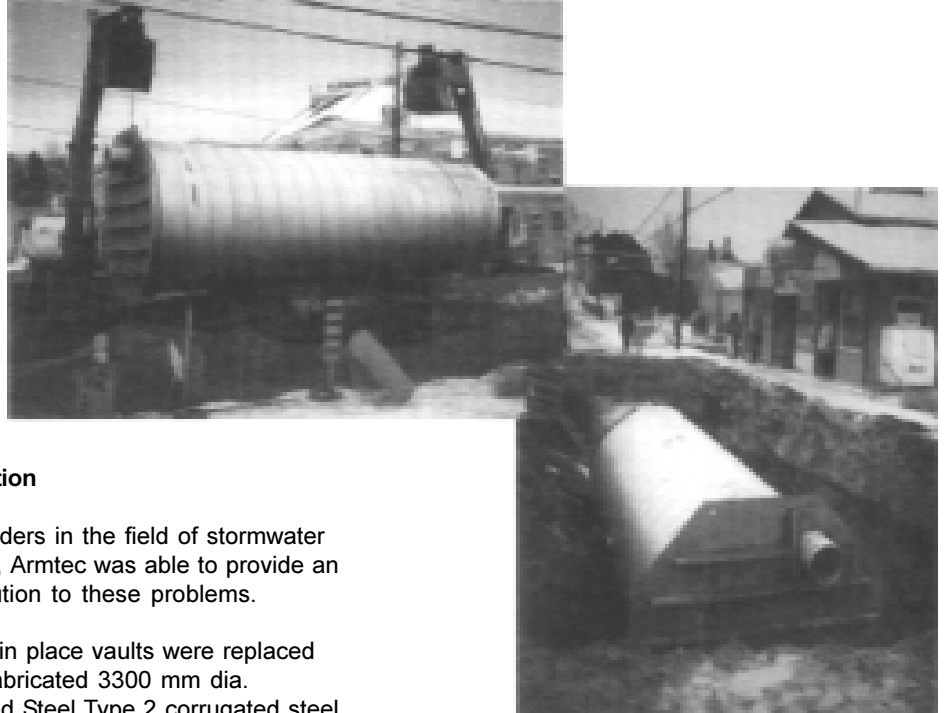
Ministry of Transportation of Ontario

CONSULTANT

M.M. Dillon Ltd., Ottawa

CONTRACTOR

George W. Drummond Ltd., Ottawa



Installation Details:

The main street business owners of Lanark, in eastern Ontario, were upset. They were informed that storm sewer construction along Main Street would leave deep excavations open literally 12 feet from store fronts for up to one month during construction! Armtec proposed a solution.

The Problem

The Ministry of Transportation undertook a sewer rehabilitation project in the village of Lanark, a small community located about 75 km west of Ottawa.

The existing storm sewer was replaced with Armtec's Ultra Flo, a smooth wall pipe and an economical storm sewer alternative. In addition to the replacement, the Ministry wanted to control the storm sewer outflow which discharges into the Clyde River. In the past, high levels of silt and sediment were causing an environmental concern.

The plan was to build two large cast in place concrete stormwater detention/ sedimentation tanks to collect the fine sediment and minimize its discharge into the Clyde River. In addition to the high cost of the initial proposal, the main street would be an open trench for up to a month.

The Solution

Being leaders in the field of stormwater detention, Armtec was able to provide an ideal solution to these problems.

The cast in place vaults were replaced with prefabricated 3300 mm dia. Aluminized Steel Type 2 corrugated steel stormwater tanks. The two structures were completely prefabricated in Armtec's Guelph, Ontario plant, complete with reinforced bulkheads and internal baffles, and then shipped to site. Each tank consisted of only two pieces so that only one joint was required per tank.

The contractor completed the excavation, placed the tanks and backfilled them all within three days!! Compare this with the expected 30 day installation time for the concrete structures and you can see why the Village of Lanark, particularly the downtown business owners, and the Ministry representatives were very happy.

Oh yes, there was an additional benefit; the Aluminized Steel Type 2 CSP alternative ended up saving the owner 30% over the cost of cast in place concrete! One more reason why you should call your local Armtec representative when you need sound, economical solutions for your design problems.

CASE HISTORY

MTO Saves Time and Money with Armtec Solution



Head Office: 15 Campbell Road, P.O.Box 3000, Guelph, Ontario N1H 6P2

Sales Offices: Nanaimo, Prince George, Edmonton, Calgary, Lethbridge, Grande Prairie, Saskatoon, Winnipeg, Thunder Bay, Sudbury, London, Toronto, Peterborough, Ottawa, Quebec City, Halifax, St. John's and Bishop's Falls

Providing Engineered solutions for over 90 years.