

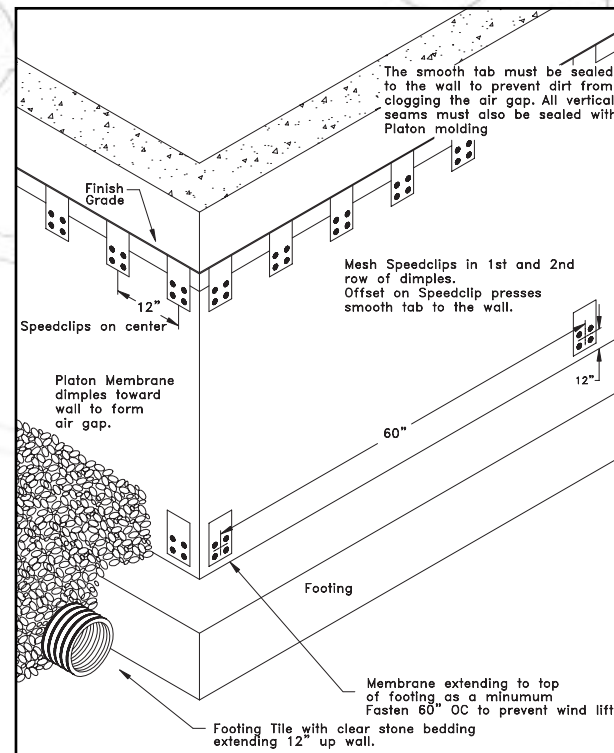
# What to do:

# What you need:

## It's really very simple!

(Detailed Instructions are included in each roll – Visit [www.systemplaton.com](http://www.systemplaton.com) for step-by-step photo instructions)

- Chalk a line at finished grade all around the foundation and run a generous bead of caulking 1" below the line
- Working from left to right, unroll the membrane along the foundation, dimples toward the wall, smooth tab at the top following the chalk line
- Fasten with Speedclips 12" OC (See Diagram) OR use Speedstrips, meshing the top 2 rows of dimples - leave a 1/4" gap between each Speedstrip.
- On vertical seams, overlap by at least 20". Water entering the seam will flow to the footing drain before it gets to the wall.
- Seal any open cut areas with Platon Molding to ensure dirt can not get behind the membrane and clog the air gap – E.G. terminations and where the smooth tab has been cut away.
- **This system must be used in conjunction with a foundation footing drain.**



Platon meets these approvals:

USA NES Evaluation  
NER # 514 (Waterproofing Membrane)  
ICC 2000 International Building Code  
Canada CCMC 12266-R  
CCMC 12878-R



# platon

KEEP IT DRY.

### Platon Membrane

- One roll for every 62 lineal feet of foundation (allows for joint overlap)
- Membrane can be overlapped horizontally by 6" for deep foundations

**Platon Speedclips** – 65 per roll of membrane OR  
**Platon Speedstrips** – 16 per roll of membrane

### Platon Molding

- (6'6" lengths) Typically 5 pieces per job.

### Caulking

For concrete or wood foundations, use asphalt based roof cement. For ICF's use foam panel adhesive

### Fasteners

- For concrete, use 1 1/4" concrete nails
- For ICF's & PWF's use 1 5/8" corrosion resistant deck screws
- Speedclips – 1 per clip
- Speedstrips – 7 per strip
- Molding – 10 per piece

### Fastening Tool

Green concrete can be hand nailed as soon as the forms are stripped. Use a nail gun for block and cured concrete.

For ICF's and PWF's use a cordless drill/screwdriver.

# Platon

## Foundation Protector

### Don't Build without it!

### Keeps water out, provides drainage

#### For a Dry, Healthy Basement

### Double Leakage Protection for:

- Block walls
- Poured Concrete Walls
- Permanent Wood (PWF)
- Insulated Concrete Forms
- Existing Foundations

### Easy to install

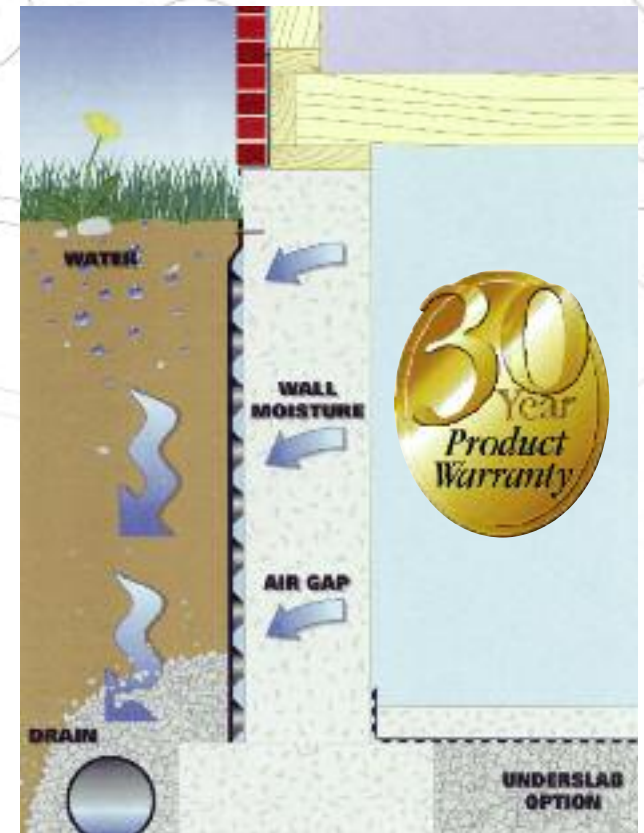


# platon

KEEP IT DRY.

- Made of tough, durable, environmentally responsible, high density polyethylene.
- Unique dimpled construction keeps wet soil 1/4" away from the foundation and provides a waterproof barrier that controls both interior and exterior moisture.
- If water breaches the membrane, it flows through the air gap to the footing drain.
- Platon easily bridges 1/4" foundation cracks and keeps working even if the wall shifts, cracks and settles.
- All weather installation.
- No additional protection needed. (Excellent protection board for spray membranes)

### Platon – it's a wrap!



1-800-265-7622  
[www.systemplaton.com](http://www.systemplaton.com)